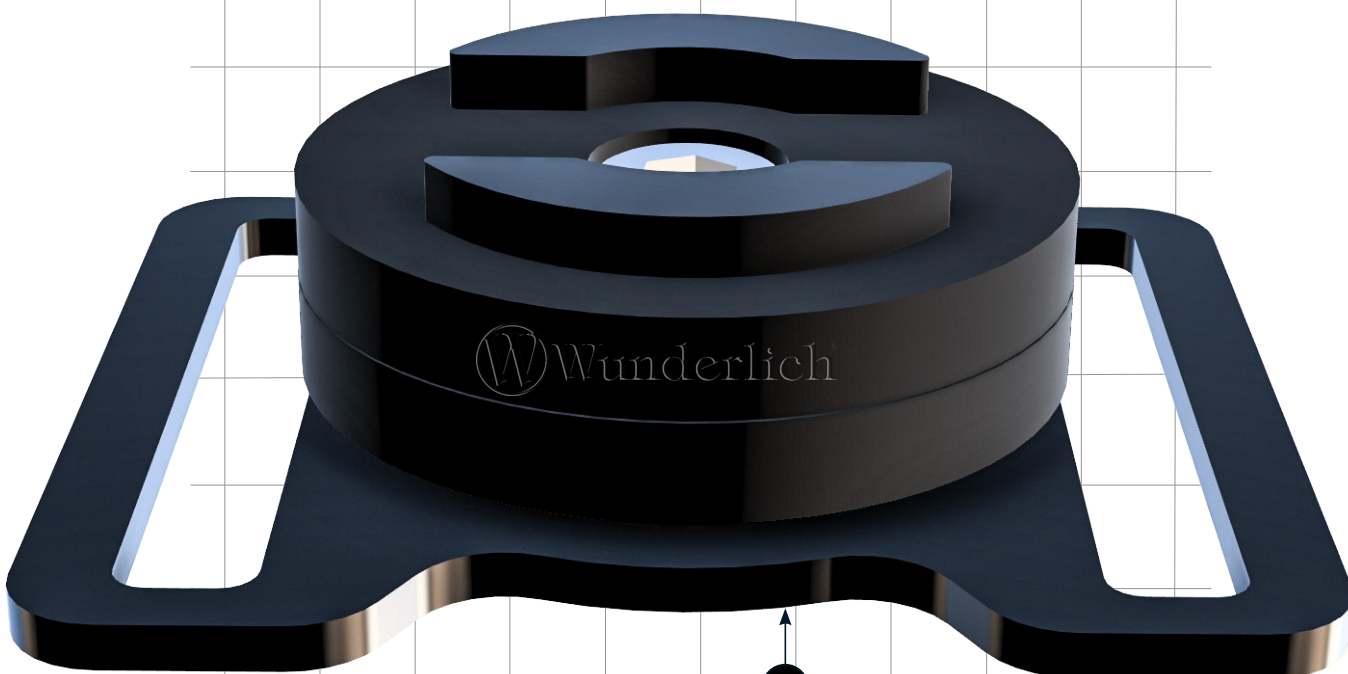


SP+ CONNECT / CLICKBAG


Side stand enlarger | Ampliación de la base para la pata lateral | Extension pour béquille latérale | Estensione del cavalletto laterale


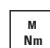
Art.-Nr: 49101-202



1

LEGENDE/KEY/FILE LÉGENDE

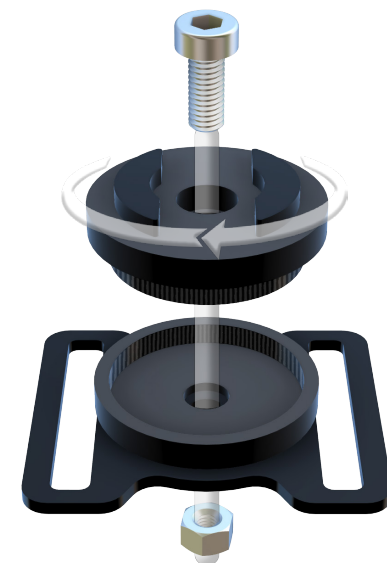
-  **Anbau Tipp**
Fitting tip
Astuce de montage
-  **Achtung**
Attention
Attention
-  **Vergrößerung**
Magnification
Grossissement
-  **Montagepaste**
Fitting lubricant
Lubrifiant de montage

-  **Schraube**
Screw
Vis
-  **Schraubensicherung**
Thread locking fluid
Freinfilets
-  **Drehmoment**
Torque
Torque
-  **Reiniger**
Cleaner
Nettoyant

#	Bauteil component composant	DE Die Farben der Abbildungen dienen nur der Veranschaulichung. EN The colors are for illustrating purposes only. FR Les couleurs utilisées sont à titre indicatif seulement.	DIN	ISO	Menge quantity quantité
1	SP-Connect vormontiert / SP-Connect pre-mounted				1
2	Schraubensicherung / Screw lock				1



2



M5x12
4Nm



1



2



3

