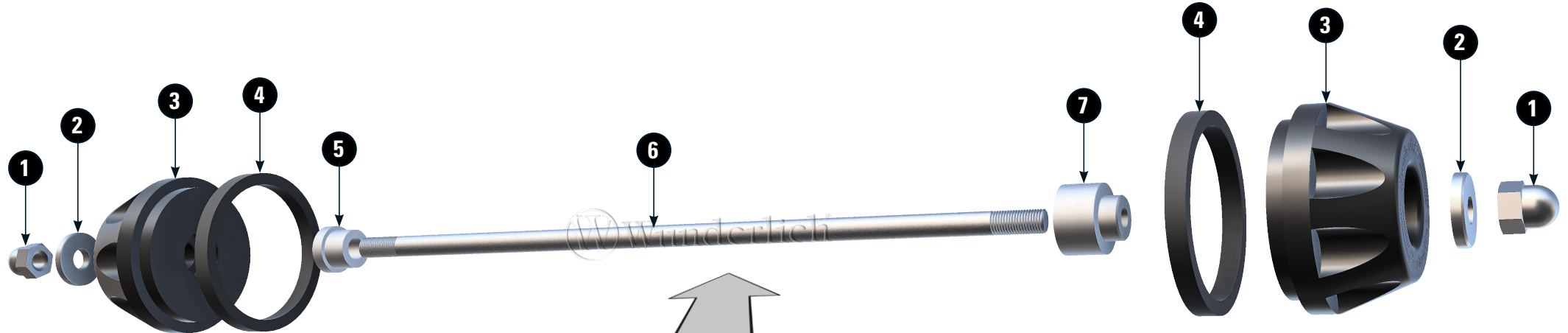


ACHSSCHUTZPAD

axle protection pad | almohadilla de protección del eje | tampon de protection de l'axe | cuscinetto di protezione dell'asse

Art.-Nr: **42162-002**



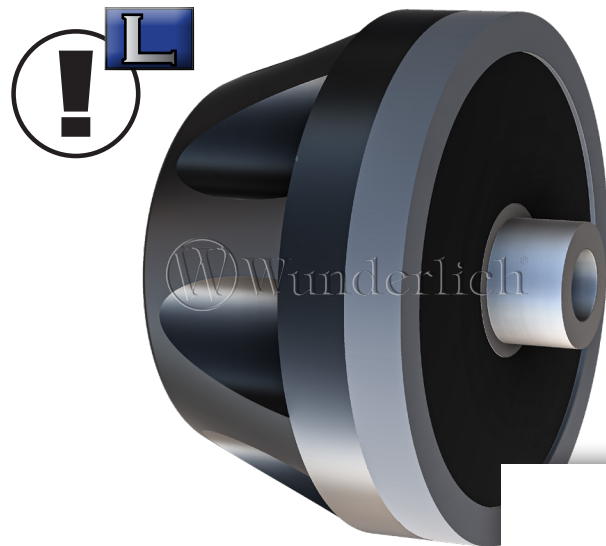
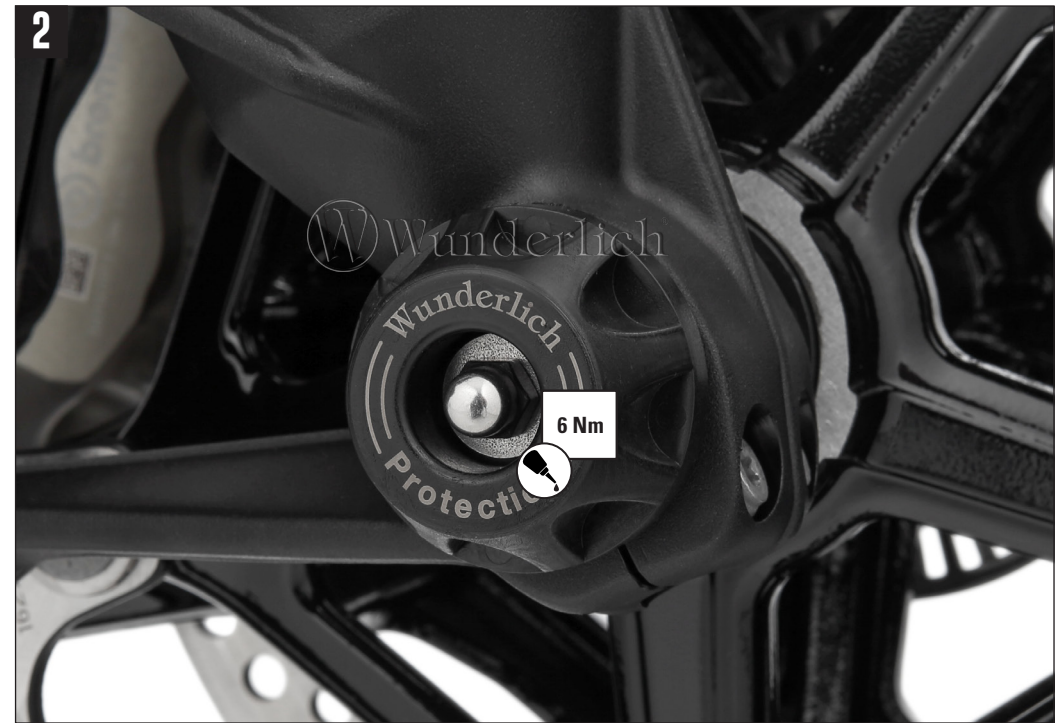
| # | Bauteil component composant | DE Die Farben der Abbildungen dienen nur der Veranschaulichung. EN The colors are for illustrating purposes only. FR Les couleurs utilisées sont à titre indicatif seulement. | DIN | ISO | Menge quantity quantité | |
|---|---|---|------------|------|-------------------------------|---|
| 1 | Hutmutter / cap nut | M6 | 6Nm | 1587 | 1587 | 2 |
| 2 | U-Scheibe / washer | M6 Ø 17,0mm | 7349 | 4759 | | 2 |
| 3 | Sturzpad / crash pad | | | | | 2 |
| 4 | Gummidichtung / sealing rubber | | | | | 2 |
| 5 | Hülse vormontiert / sleeve pre-assembled | | | | | 1 |
| 6 | Gewindestange / threaded rod | M6 | | | | 1 |
| 7 | Hülse vormontiert / sleeve pre-assembled | | | | | 1 |
| 8 | Schraubensicherung / thread locking fluid | | | | | 1 |

LEGENDE/Key/file Légende

- Anbau Tipp**
Fitting tip
Astuce de montage
- Achtung**
Attention
Attention
- Vergrößerung**
Magnification
Grossissement
- Montagepaste**
Fitting lubricant
Lubrifiant de montage

- Schraube**
Screw
Vis
- Schraubensicherung**
Thread locking fluid
Freinfilets
- Drehmoment**
Torque
Torque
- Reiniger**
Cleaner
Nettoyant





INNENSEITE BEACHTEN

Note inside