

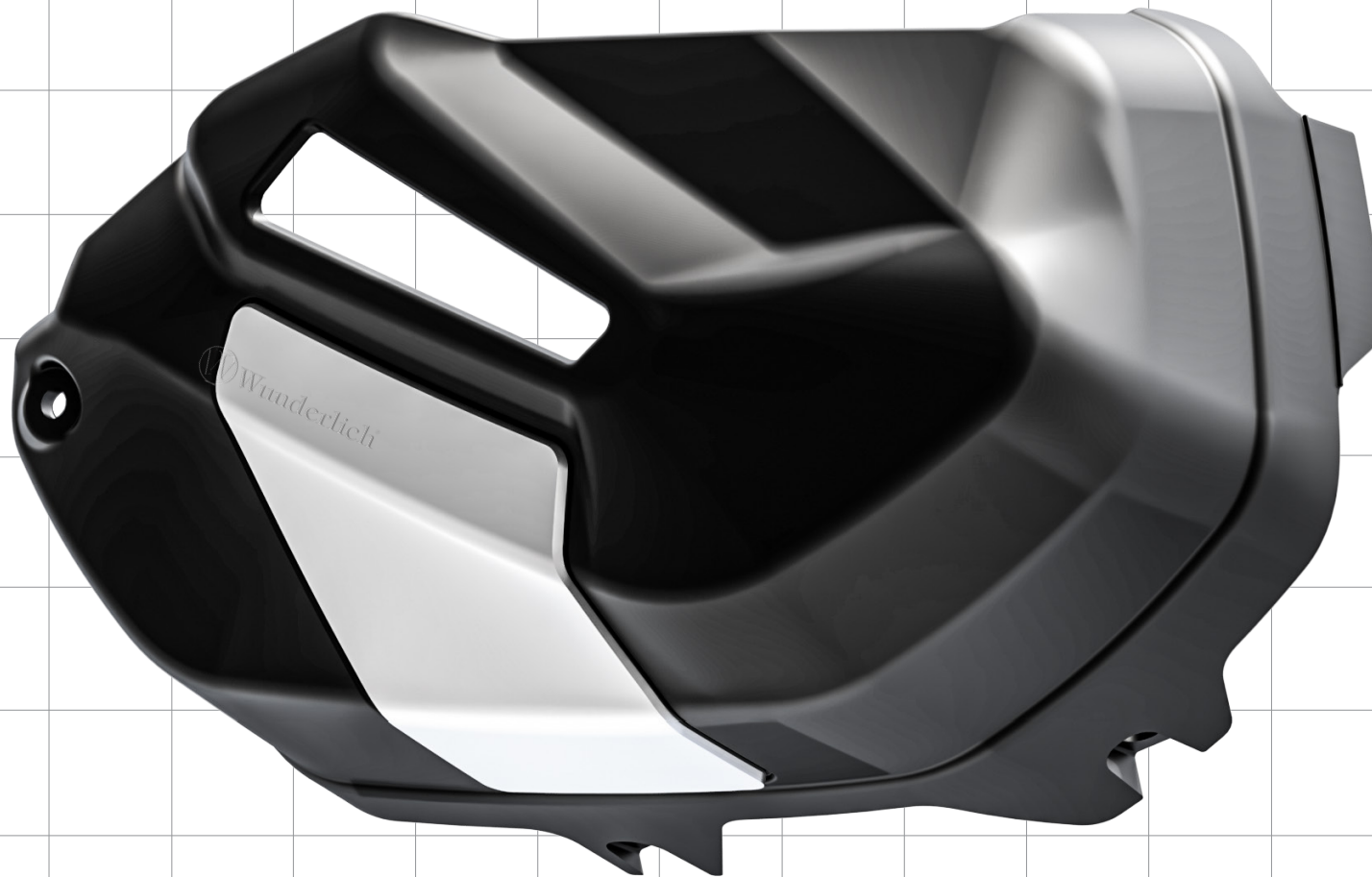
# VENTILDECKELPROTEKTOREN

Valve cover protector | Protector de y tapa de válvula | Protection couvre culasse | Protezione coperchio valvole

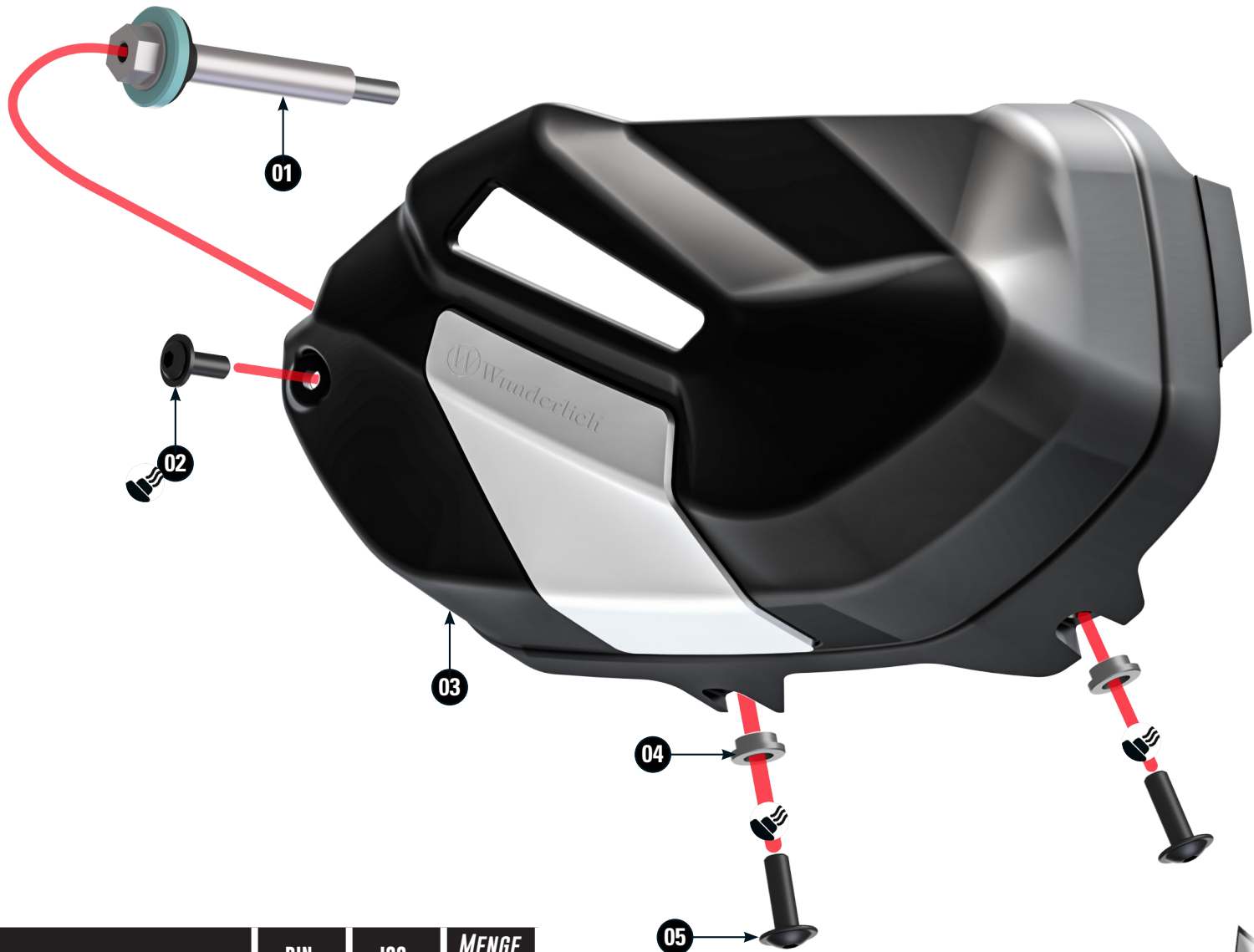


<https://youtu.be/11Gp5OSTxSM>







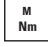
Art.-Nr: **35613-012**



1



LEGENDE/KEY/FILE LÉGENDE

-  **Anbau Tip**  
Fitting tip  
Astuce de montage
-  **Achtung**  
Attention  
Attention
-  **Vergrößerung**  
Magnification  
Grossissement
-  **Montagepaste**  
Fitting lubricant  
Lubrifiant de montage
-  **Schraube**  
Screw  
Vis
-  **Schraubensicherung**  
Thread locking fluid  
Freiniflets
-  **Drehmoment**  
Torque  
Torque

#	BEZEICHNUNG / DESCRIPTION	DIN	ISO	MENGE AMOUNT
1	Ventildeckelschraube / valve cover screw 10Nm			2
2	Linsenflanschschraube / lens head screw M6x14 10Nm	7381SA2	7381SA2	2
3	Ventildeckelschutz rechts-links / Valve cover protector right-left			2
4	Stufenhülse / grade sleeve			4
5	Linsenflanschschraube / lens head screw M5x16 5Nm	7381SA2	7381SA2	4





**VENTILDECKEL VOR DER MONTAGE GRÜNDLICH REINIGEN. BEI STARKER VERSCHMUTZUNG GEBEBENFALLS WIEDERHOLEN.**

*Thoroughly clean the valve cover before installation. If heavily soiled repeat if necessary.*



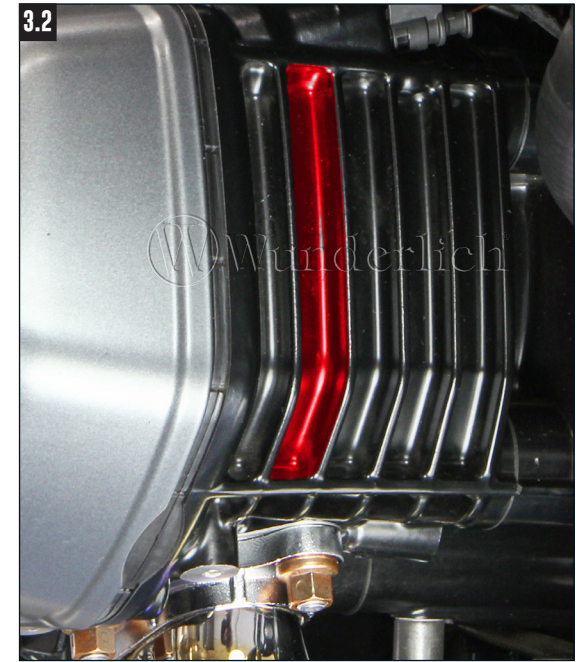
**DICHUNG DER VENTILDECKELSCHRAUBE EINÖLEN.**

*Lubricate the gasket of the valve cover screw.*

3.1

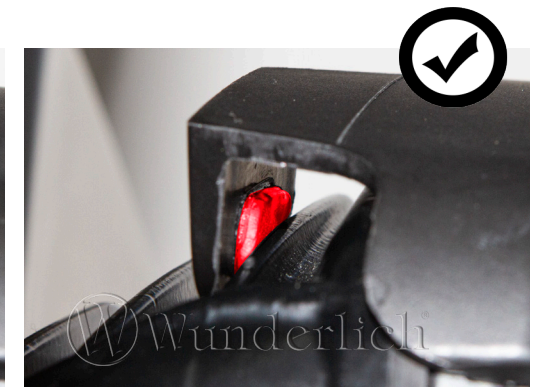


3.2



**VENTILDECKELSCHUTZ ERST VORNE ZWISCHEN DIE ERSTE UND ZWEITE KÜHLRIPPE EINHAKEN.**

*First hook the valve cover protector between the first and second cooling fin.*





**SCHRAUBEN DER REIHE NACH VORMONTIEREN UND DANACH MIT ANGEGEBENEN DREHMOMENT ANZIEHEN.**

*Pre-assemble the screws in sequence and then tighten to specified torque.*