


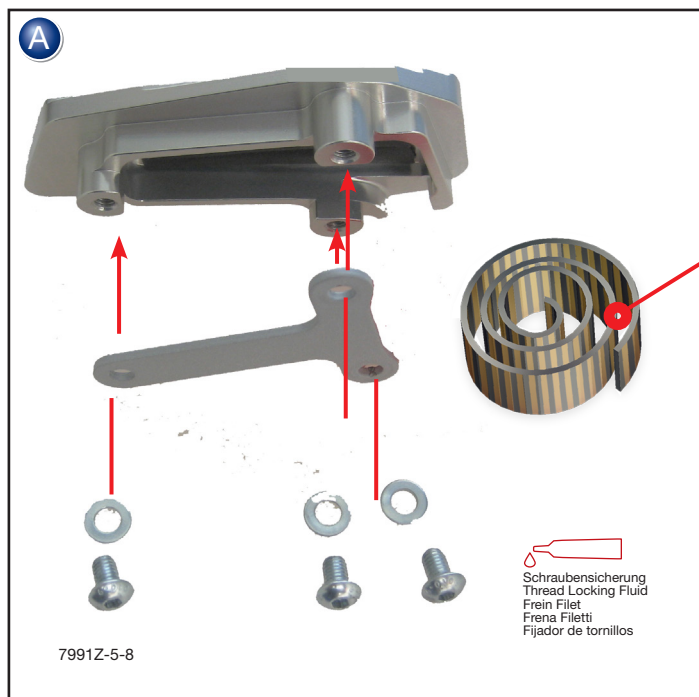
BREMSHEBELVERGRÖßERUNG

Brake lever enlargement | Extension du levier de frein | Ampliación de la palanca de freno | Estensione della leva del freno


Art.-Nr: **26231-001**

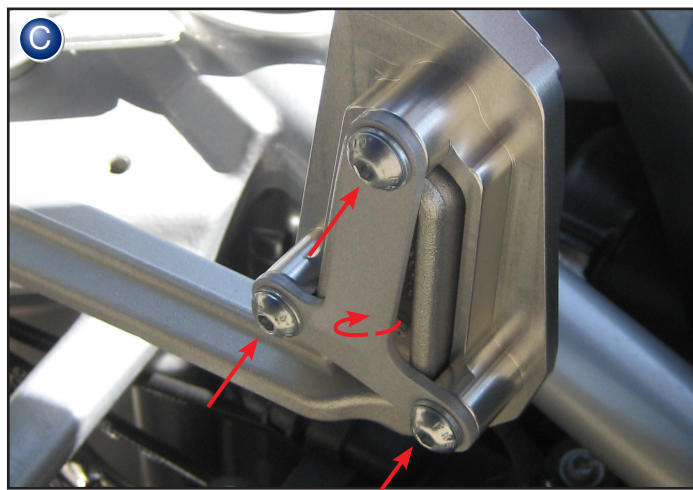
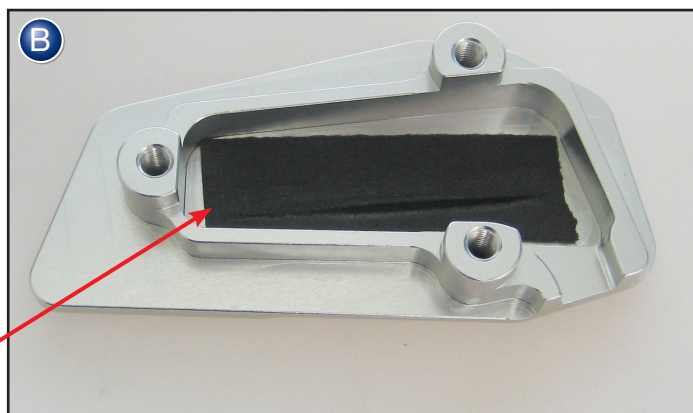
Vielen Dank für Ihr Vertrauen zu unserem Produkt.

1.  Kleben Sie in die Bremshebelvergrößerung ein Stück Moosgummi (Bild B).
2. Befestigen Sie die Bremshebelvergrößerung mit dem Klemmblech und den beiliegenden Schrauben. Sichern Sie die Schrauben mit Schraubensicherungsmittel (Bild C).




Thank you for purchasing our product.

1.  Stick a piece of the supplied soft rubber foam to the underside of the sidestand enlarger (Image B).
2. Apply a little bit of thread locking fluid (such as Loctite) to the screws and attach the enlarger to the brake pedal with the clamping plate as shown (Image C).



Grazie di aver acquistato un prodotto Wunderlich.

1.  Applicare un pezzo della gomma in dotazione al interno dell'estensione (figura B).
2. Installare l'estensione della leva del cambio con il supporto in metallo e le viti in dotazione (figura C). Si raccomanda di utilizzare del blocca filetti.

