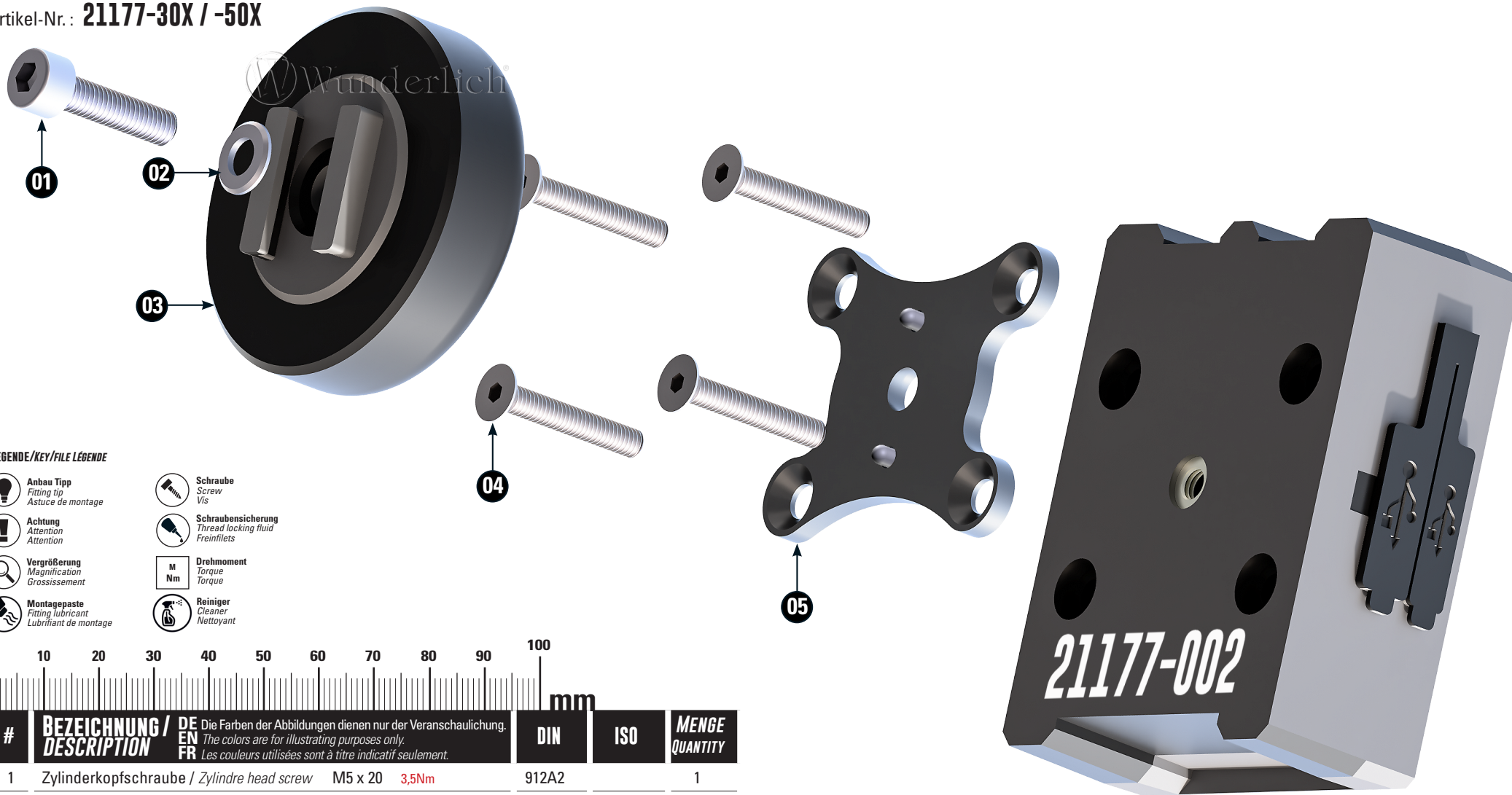








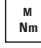

SP-CONNECT MODUL

SP-Connect Module

Artikel-Nr.: 21177-30X / -50X



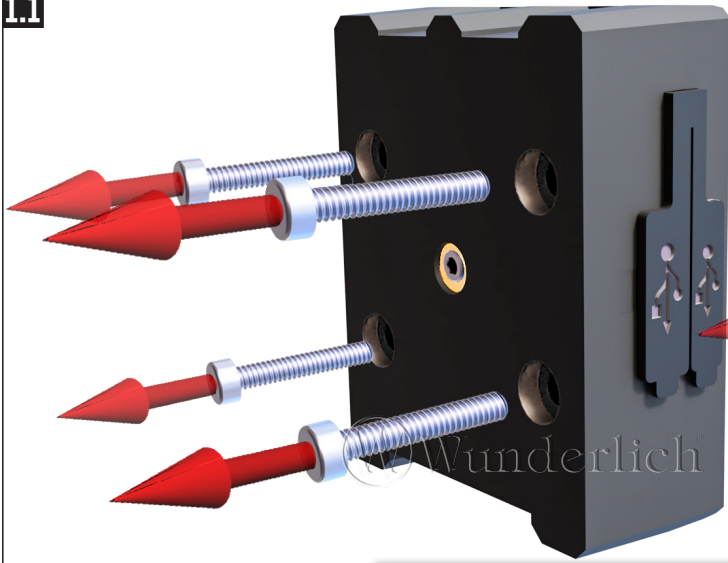
LEGENDE/KEY/FILE LEGENDE

-  **Anbau Tipp**
Fitting tip
Astuce de montage
-  **Achtung**
Attention
Attention
-  **Vergrößerung**
Magnification
Grossissement
-  **Montagepaste**
Fitting lubricant
Lubrifiant de montage
-  **Schraube**
Screw
Vis
-  **Schraubensicherung**
Thread locking fluid
Freiniflets
-  **Drehmoment**
Torque
Torque
-  **Reiniger**
Cleaner
Nettoyant

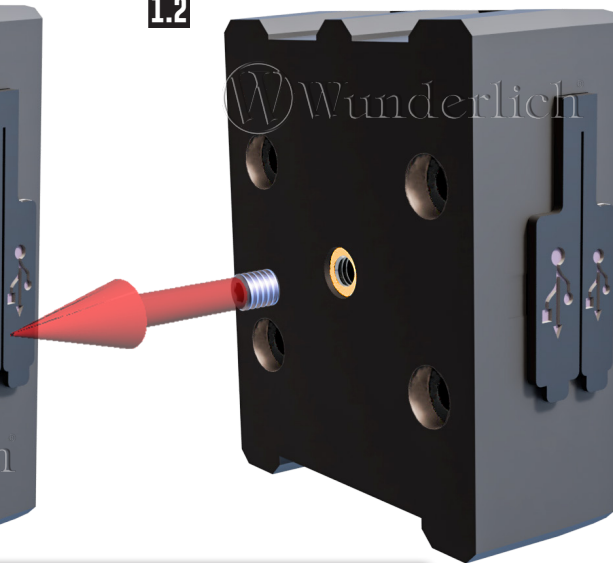


#	BEZEICHNUNG / DESCRIPTION	DE EN FR	Die Farben der Abbildungen dienen nur der Veranschaulichung. The colors are for illustrating purposes only. Les couleurs utilisées sont à titre indicatif seulement.	DIN	ISO	MENGE QUANTITY
1	Zylinderkopfschraube / Zylindre head screw	M5 x 20	3,5Nm	912A2		1
2	U-Scheibe / Washer	M5		125A2		1
3	Adapter / Adaptor					1
4	Senkkopfschrauben / countersunk screws	M4 x 25	3,0Nm	7991A2	7991A2	4
5	Positions-Blech / Position plate					1

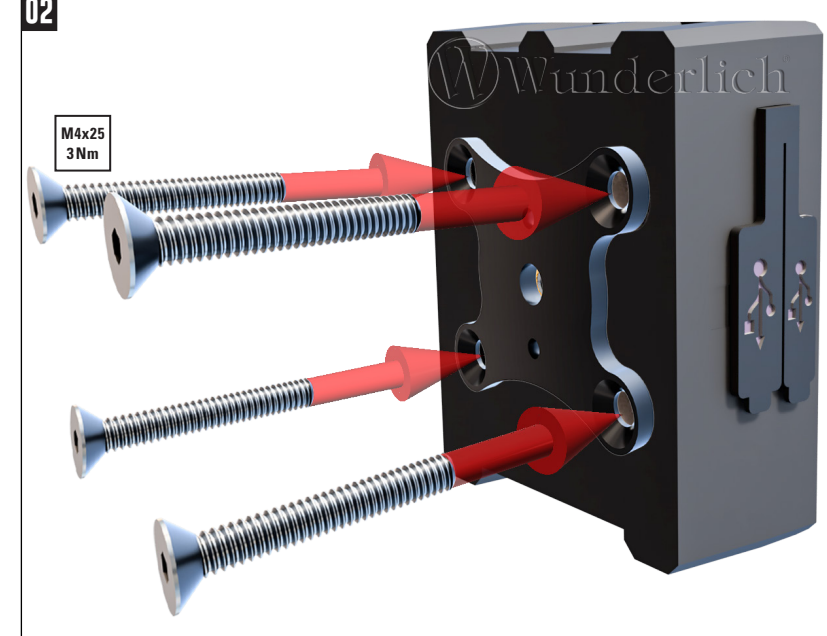
1.1



1.2



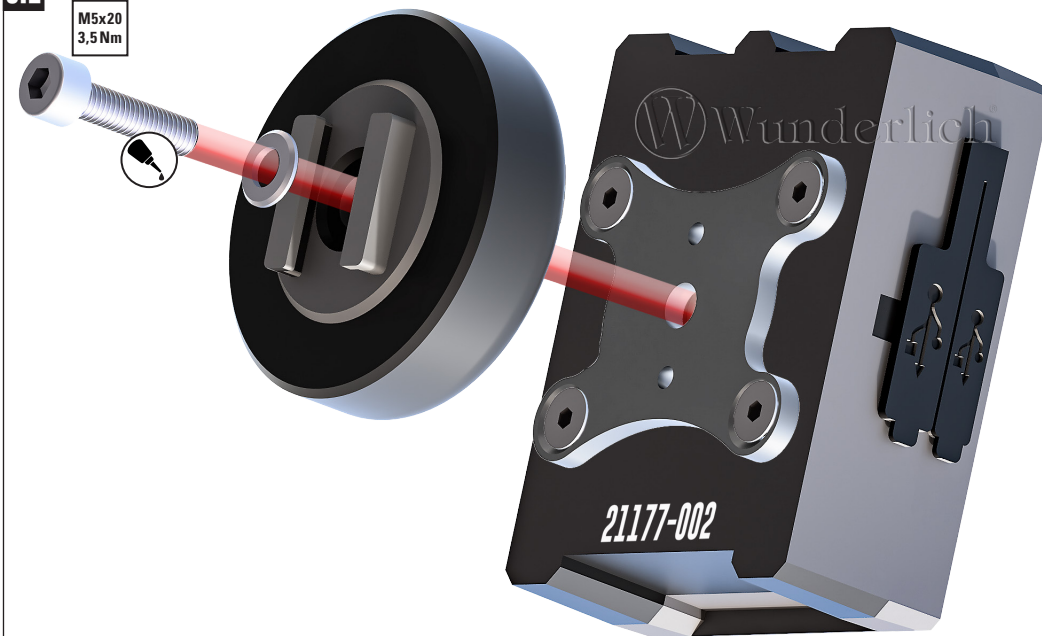
02



DE ZYLINDERKOPFSCHRAUBEN UND DER GEWINDESTIFT FALLEN WEG

EN Zylindre head screw and grub screw not required
FR Vis sans tête non applicable

3.1



3.2

