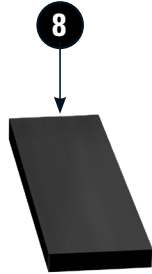
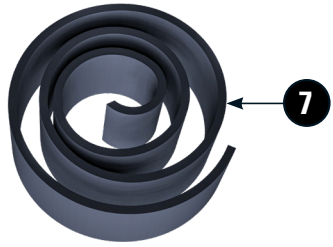


SCHALTASSISTENT-SCHUTZ

Quickshifter protection | Asistente de cambio protector | l'assistant de changement protection | Protezione per il cambio assistito

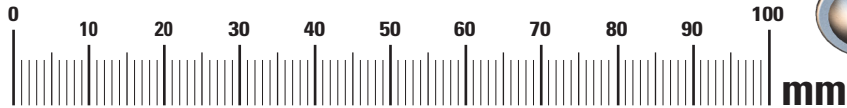
Art.-Nr: 26283-102



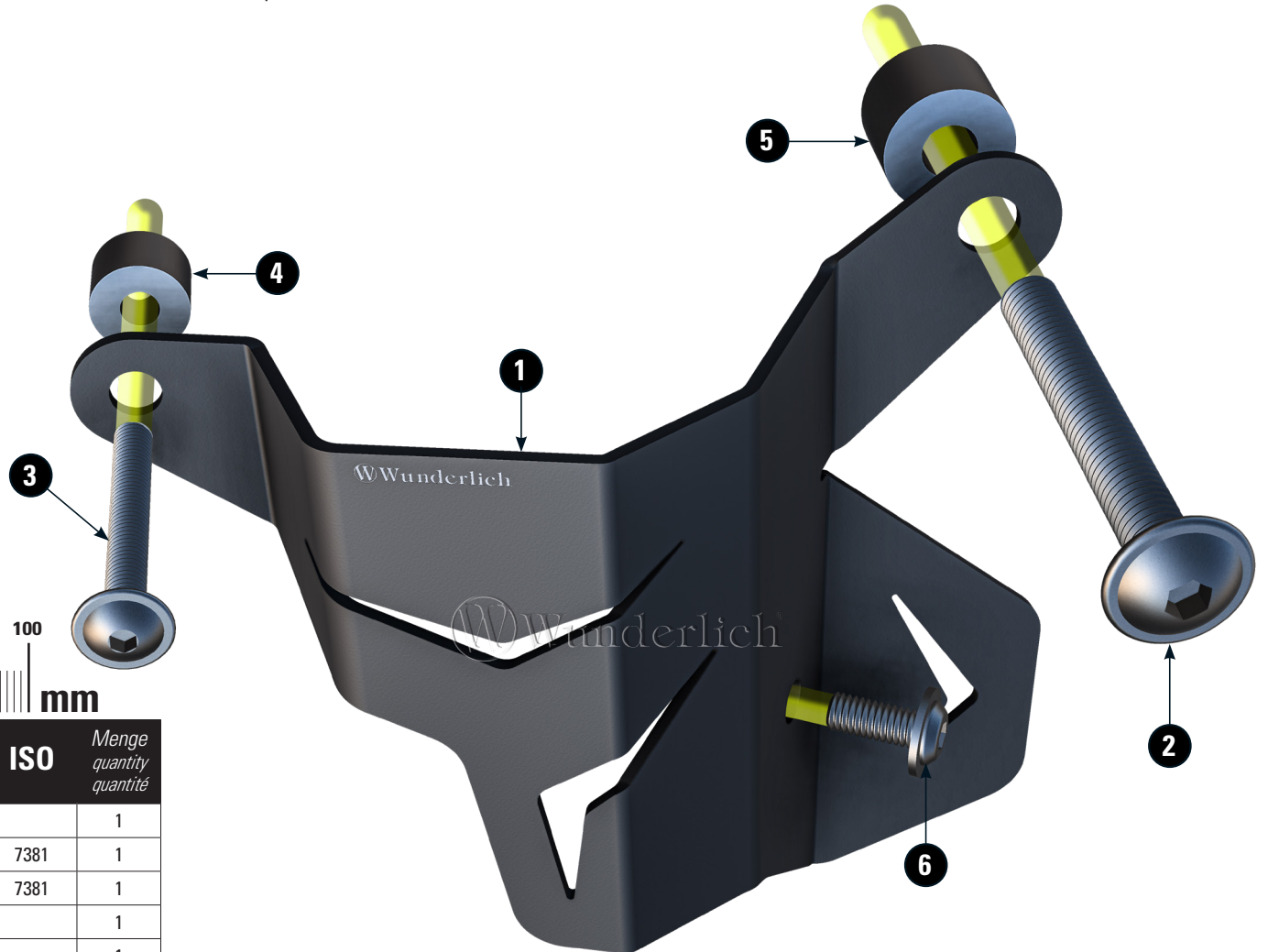
LEGENDE/Key/file Légende

- Anbau Tipp**
Fitting tip
Astuce de montage
- Achtung**
Attention
Attention
- Vergrößerung**
Magnification
Grossissement
- Montagepaste**
Fitting lubricant
Lubrifiant de montage

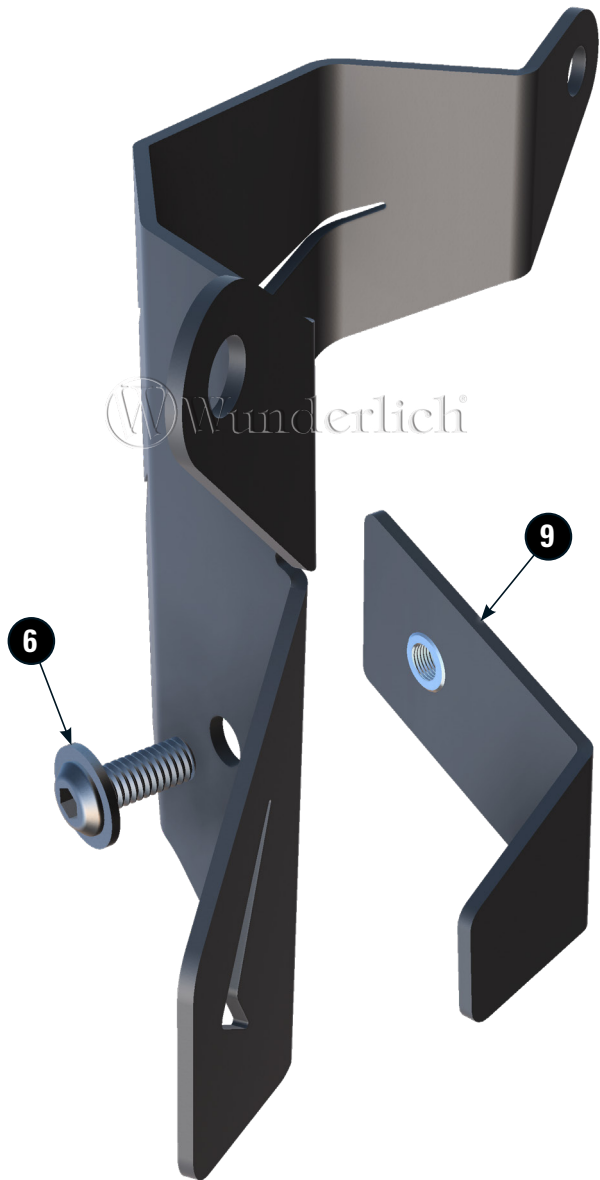
- Schraube**
Screw
Vis
- Schraubensicherung**
Thread locking fluid
Freinfilets
- Drehmoment**
Torque
Torque
- Reiniger**
Cleaner
Nettoyant



| # | Bauteil component composant | DE Die Farben der Abbildungen dienen nur der Veranschaulichung. EN The colors are for illustrating purposes only. FR Les couleurs utilisées sont à titre indicatif seulement. | DIN | ISO | Menge quantity quantité |
|---|--|---|------|------|-------------------------------|
| 1 | Schaltassistent-Schutz / quickshifter protection | | | | 1 |
| 2 | Linsenflanschschaube / lens head screw M8x60 | | 7381 | 7381 | 1 |
| 3 | Linsenflanschschaube / lens head screw M5x40 | | 7381 | 7381 | 1 |
| 4 | Hülse / Sleeve 10mm | | | | 1 |
| 5 | Hülse / Sleeve 15mm | | | | 1 |
| 6 | Linsenflanschschaube / lens head screw M6x14 | | 7381 | 7381 | 1 |
| 7 | Moosgummi / Foam rubber | | | | 3cm |
| 8 | Gummipuffer / rubber pad | | | | 2,5cm |
| 9 | Klemmblech / clamping sheet | | | | 1 |



1



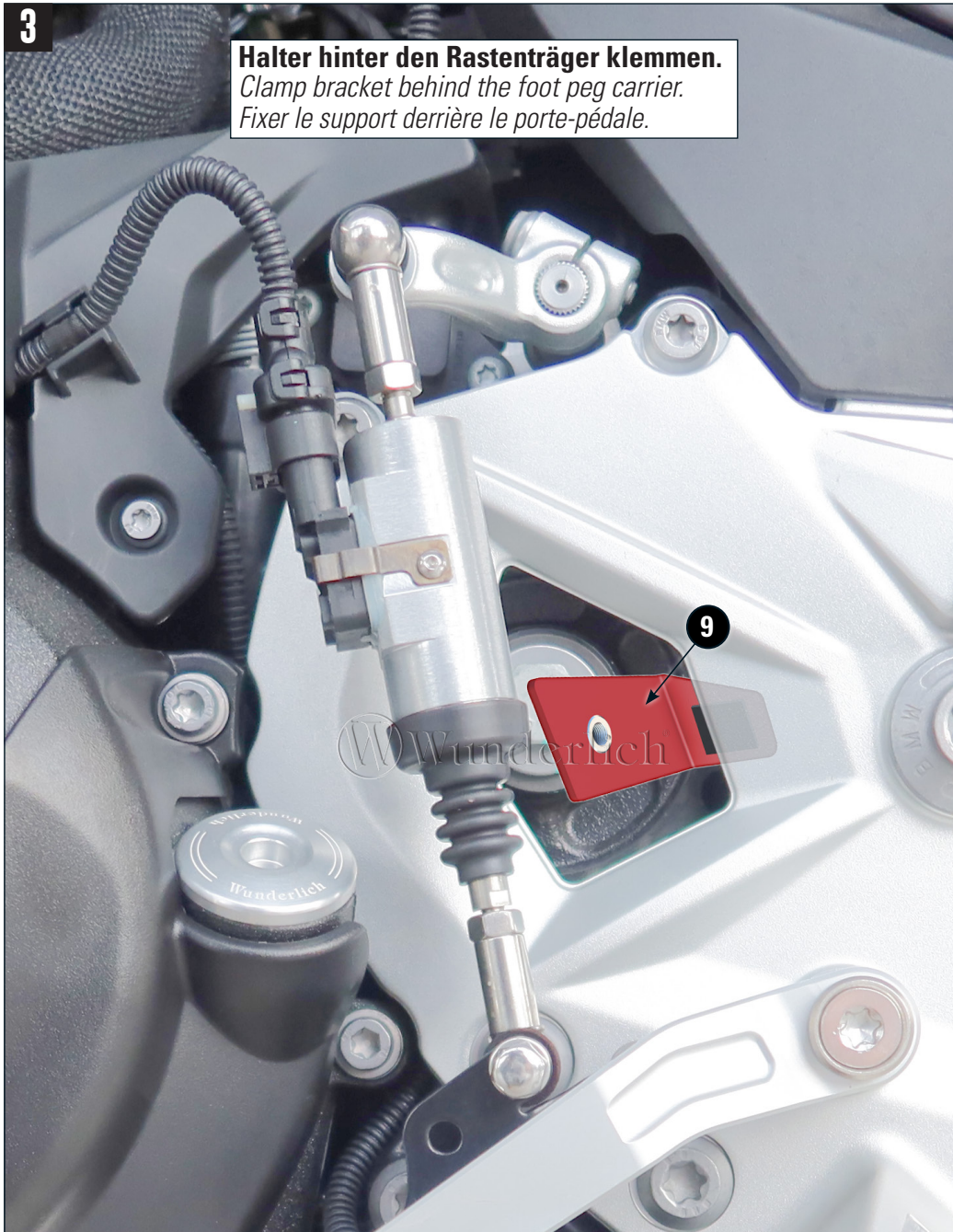
2



Die Flächen vor dem Bekleben entfetten!
Degrease the surfaces before sticking!
Dégraissez les surfaces avant de les coller!

3

Halter hinter den Rastenträger klemmen.
Clamp bracket behind the foot peg carrier.
Fixer le support derrière le porte-pédale.



4

